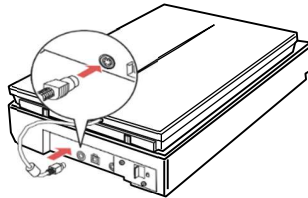


# Scanning Film Strips

## I. Getting Started

### A. Remove the Document Mat and Plug in the Cover Cable

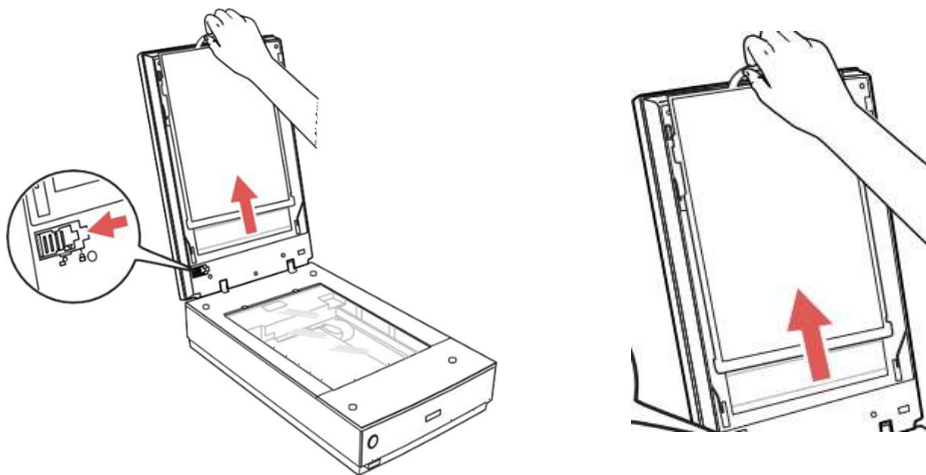
- *Remove the document mat from the scanner to scan film or slides.* This uncovers the transparency unit window beneath the mat.
- Make sure the cover cable is connected to the **Option** port. (See image below)



**Note:** Always turn off the scanner before connecting or disconnecting the cover cable.

Use the handle on document mat to slide the mat out from inside the scanner cover. (See image below)

**Note:** Make sure the transparency unit transportation lock is in the unlocked position.



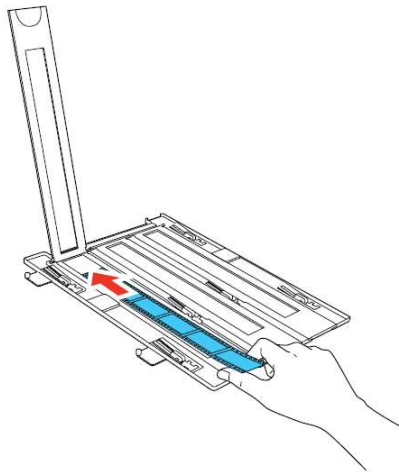
## II. Place the 35 mm film strips on the Scanner

- You can scan up to three 35 mm film strips using the holder.

**Caution:** Hold only the edges of the strips or use gloves, or you may damage the film.

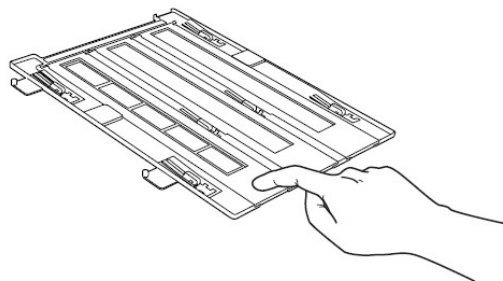
**Note:** Make sure the white areas on the back of the holder are not scratched, dirty, or covered in any way or the scanner may not correctly detect the holder during scanning. **You cannot scan negative slides.**

- Open the 35 mm film strip holder covers.
- Slide up to three film strips into the holder with the shiny side facing up so that images and any wording on the film strips are not backwards. (see image below)

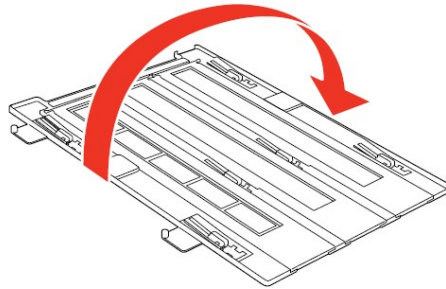


**Note:** Do not cover any of the small holes in the holder; they are used as guides in the Thumbnail feature.

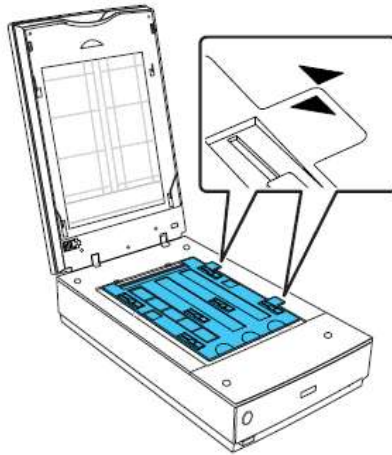
- Close any open holder covers and press them down until they click into place. Also press down all the edges of the covers to secure them. Make sure the film strips are not pinched or curled.



- Turn the film holder over.



- Open the scanner cover
- Place the holder on the scanner glass as shown. Align the arrows on the holder with the arrows on the scanner.



**Note:** There are two pieces of the film strip holder that will fit into the holes below the arrows.

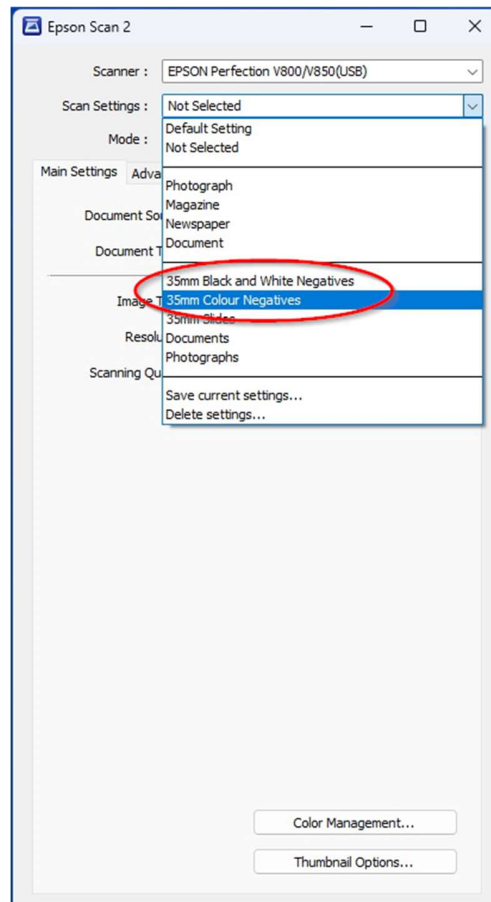
- Close the scanner cover gently to keep the film holder in place. If the scanner cover does not close completely, then you will need to make sure the filmstrip holder is properly placed on the scanner glass.

### C. Adjust your Settings

- Double click the Epson Scan icon on the desktop

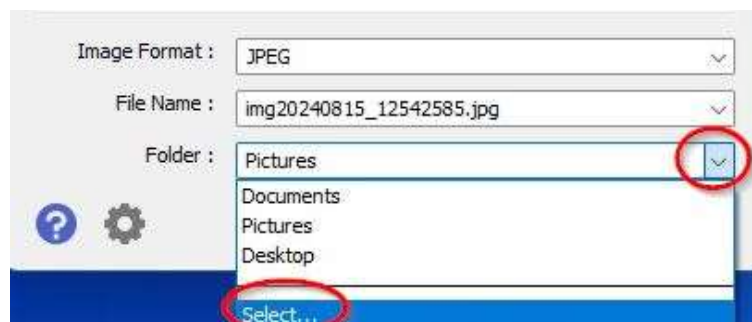


- Click the Scan Settings dropdown and choose the 35mm Colour Negatives or 35mm Black and White Negative option”.



#### D. Determine the File Save Settings

- The File Save Settings screen will be used to determine where to save scans.
- Choose a location for your scans by clicking the folder dropdown and choosing select to identify your USB or external memory drive.
- **DO NOT SAVE TO THIS COMPUTER. ALL DATA WILL BE ERASED UPON LOGOFF.**

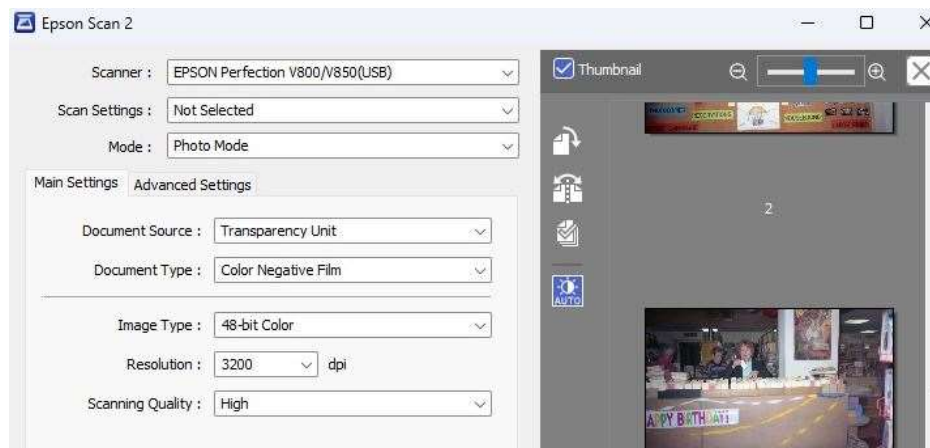
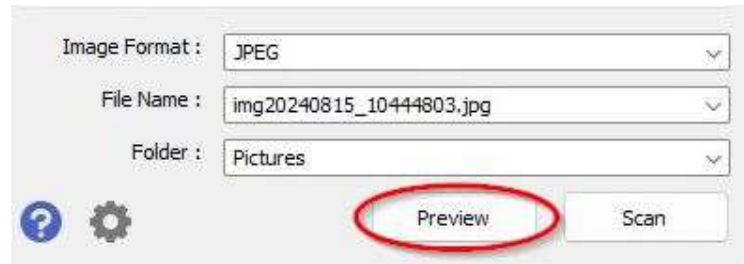


- Click **“OK”**



### III. Scanning

- Make sure the filmstrip tray is placed properly on the glass. Close the scanner cover.
- Click the "**Preview**" option.



- Click "**Scan**" and the images will be scanned to your selected folder.