

Get it sorted

We provide households and businesses in the Mildura Rural City Council area a kerbside bin service.

Our four bin system is designed to help you manage your waste by sorting materials and keeping as much as possible from landfill.

Which bin, which day?



Check your bin day at mildura.vic.gov.au/waste or contact Council for collection information.

Ensure your bin is emptied

- Put it out the night before or by 5am on collection day
- Don't overfill – ensure the lid closes flush
- Keep it clear from parked cars, power poles, trees and letter boxes
- Put the right thing in the right bin
- Place heavy items at the bottom of the bin to help push out the contents when collection occurs

New, lost and stolen bins

Call Council to arrange new bins or bin repairs.

Missed bins

Bins can be emptied any time between 5am and 9pm. If your bin has not been emptied by the morning after your scheduled collection day please contact Cleanaway Mildura on 131 339.

Bin placement

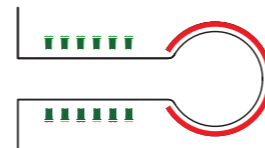
Arrange your bins at least one metre apart and clear from trees, cars, light poles and other obstructions. Bins should face the road with the wheels towards your property.

If you live in town, place your bin on the nature strip or footpath 10–100cm from the kerb. In rural areas, place bins 1m from the edge of the sealed road or the graded road shoulder.



Live in a court?

Place bins as shown in this diagram.



Live in a hammerhead?

Place bins as shown in this diagram.



Your small acts make a big impact

It makes a big impact when we all do our part, no matter how small, to sort our waste properly. Recycling and reducing waste in the first place helps keep valuable resources out of landfill so they can be used again.



More information

For more information about Kerbside Bin Collection please visit our website mildura.vic.gov.au/waste

Or call us: 03 5018 8100

Kerbside bin collection

Information about your kerbside bin service.



Mildura Rural City Council



What goes in each bin

For a full list visit mildura.vic.gov.au/bins

Not in any bin: Electronic waste or power cords, batteries of any kind, chemicals or hazardous waste, ash, building waste, soil or rubble.
Scan the QR code to find out where to dispose of these items.



Food and garden organics

Food scraps and garden clippings only.
Remove stickers from fruit.

✓ Yes

- ✓ Out of date, inedible food
- ✓ Coffee grounds, loose leaf tea, and tea bags
- ✓ Dairy products including yoghurt
- ✓ Fruit and vegetable scraps
- ✓ Meat, seafood, bones, egg shells
- ✓ Leaves, plants, twigs, grass, weeds
- ✓ Pet waste and compostable litter



⊘ No

Plastic, including biodegradable or non-certified compostable plastics, coffee pods, non-compostable kitty litter, large branches, tree stumps, liquids, nappies, wet wipes, clothing/bedding.

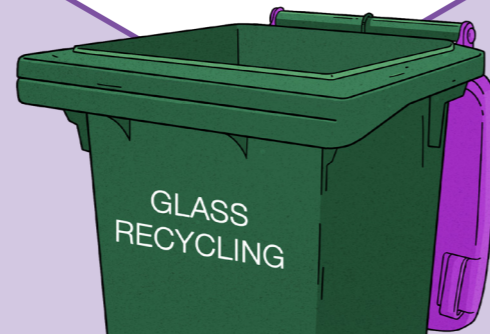
Glass recycling

Put lightly rinsed, empty glass bottles and jars into the bin loose, not in bags.

Lids to be removed, plastic lids disposed of in the general rubbish bin. Metal lids recycled in the mixed recycling

✓ Yes

- ✓ Glass bottles including beer, wine and olive oil bottles
- ✓ Glass jars including pasta sauce and condiment jars
- ✓ Glass bottles and jars for medicine
- ✓ Broken glass jars and bottles accepted



⊘ No

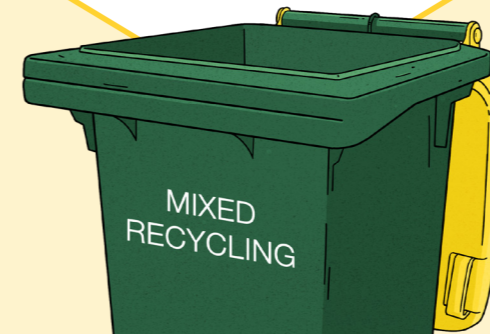
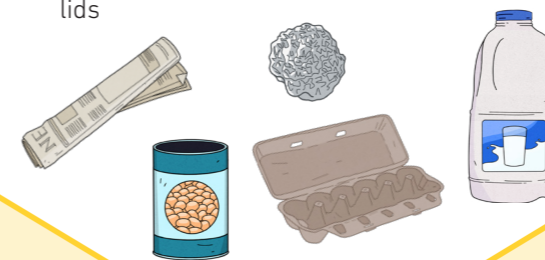
Plastic bags or packaging, loose lids and caps from bottles or jars, corks, pumps, sprays, droppers, cardboard, crockery such as plates, dishes, mugs, drinking glasses, glass cookware, vases, light bulbs.

Mixed recycling

Put your recycling in the bin loose, not in bags.
Flatten boxes to save space.
Glass no longer goes in this bin.

✓ Yes

- ✓ Accepted plastic bottles and containers
- ✓ Aluminium and steel tins, cans, foil and metal lids
- ✓ Cardboard, cereal boxes, egg cartons
- ✓ Paper, newspapers, magazines, paper envelopes



⊘ No

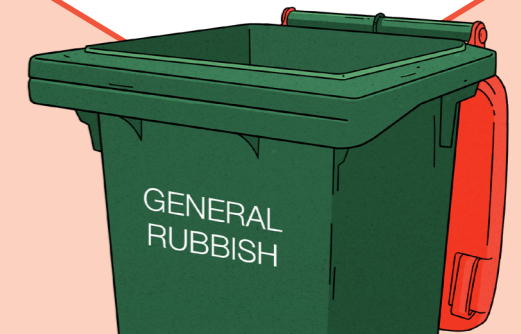
Plastic bags, other soft plastics, clothing, shoes, textiles, coated or waxed cardboard, electronic waste and batteries, glass, crockery, polystyrene (styrofoam), bagged rubbish and bagged recycling.

General rubbish

Use this bin only for items that can't be reused or recycled.
Food waste no longer goes in this bin.

✓ Yes

- ✓ Broken glassware, crockery and mirrors
- ✓ Nappies, wet wipes, non-compostable kitty litter
- ✓ Old clothing, shoes or textiles that can't be repaired or donated
- ✓ Loose plastic lids from jars and bottles



⊘ No

Electronic waste and batteries, food and garden waste, household chemicals, recyclable items, soil, building materials.